

# CartGuard® 2 Flex



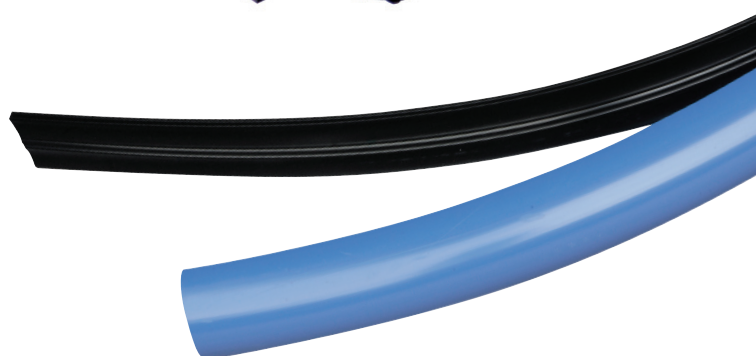
## Eye-catching color with superior protection.

Our impact-resistant bumper provides reliable protection and a simply beautiful, curved aesthetic. It's designed to fit rounded fixture corners or other curved applications for strong, seamless protection.

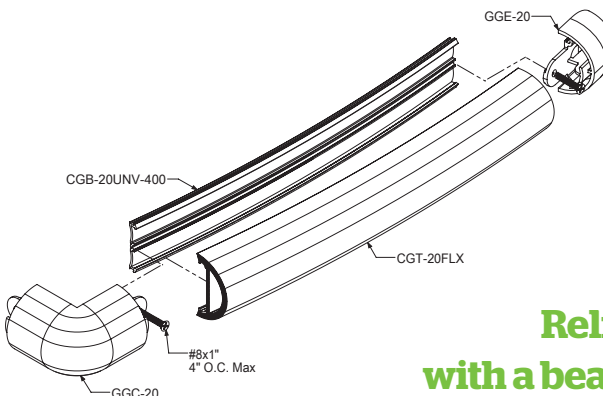
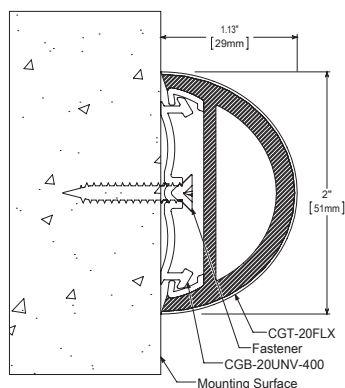
**Strong** Flexible PVC flattens out upon impact and releases impact energy away from store fixtures

**Speedy Install** All parts snap together for easy installation and guaranteed alignment

**Innovative** Designed to wrap around curved fixtures and can complete a radius as small as 4 inches

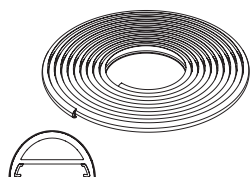


# CartGuard® 2 Flex



**Reliable protection  
with a beautiful aesthetic!**

## Components:



### Flexible CartGuard® 2" Top

CGT-20FLX-COLOR

Sold in 72' lengths

Packed: 72' coil per box

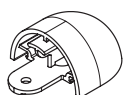


### 2" Mounting Base (PVC)

CGB-20UNV-400

Sold in 12' lengths

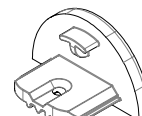
Packed: 24 per box (288' total)



### 2" Snap-on End Cap

GGE-20-COLOR

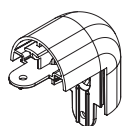
Packed: 200 per box



### 2" Quick Stop End Cap

GGE-20DS-COLOR

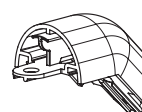
Packed: 250 per box



### 2" Snap-on 90° Corner

GGC-20-COLOR

Packed: 100 per box



### 2" Snap-on 135° Corner

GGC-20.45-COLOR

Packed: 100 per box

\* 2" Snap-on Custom Corners Available. Metal-reinforced corners made to order for fixture angles between 95°–175°.

401  
Black

## Stock Colors

Available to **QuickShip**  
within 24 Hours. Please  
inquire about quantities  
greater than 2,880 feet.

111  
Silver

105  
Steel  
Gray

201  
Green

## Standard Colors

Available to ship  
within 1 week.

604  
Light  
Caramel

101  
Gray

501  
Red

601  
Beige



## Custom Color Matching

Pre-matched colors ship within 3  
weeks. Otherwise allow 6-8 weeks  
for delivery. Minimums may apply.



## McCue Corporation

Peabody, MA 01960, USA  
+1 (800) 800 8503  
customer@mcue.com

## McCue UK & Europe

Milton Keynes, United Kingdom  
+44 (0)1908 365 511  
uksales@mcue.com

## McCue Asia

迈客(厦门)有限公司  
Xiamen, Fujian, China  
+86-592-2200790

**mcue.com**

